



Holtermann's Corner ... then



Holtermann's Corner ... now

Dear Hill Enders & Tambaroorians

Apologies that our newsletter is a little late in reaching you. But we have been very busy with preparing our 'new' old building for Hill End & Tambaroora Family History & Local Information Centre. It has taken months to prepare the building and fit it out for this day.

Our grand opening, on Saturday, 26 October, was well attended with around 60 locals and Hill End & Tambaroora Gathering Group members coming from far and wide. We were so pleased to present the centre to everyone. For those who couldn't attend, we have a great pictorial of the new shopfront of our Hill End & Tambaroora Family History & Local Information Centre and some history about the old Holtermann's Corner. Please come and visit the centre.



On Saturday, 1 March 2025, the annual gathering at Rhodes will be held including the Annual General Meeting of the Hill End & Tambaroora Gathering Group. We hope to see you there.

NSW Cemetery Reforms

As resolved at the 16 October 2024 Bathurst Council meeting, Bathurst Council is undertaking consultation with our rural villages impacted by the NSW Cemetery Reforms.

The Rural Cemetery Reforms project has been launched on the YourSay Bathurst website to seek feedback. Submissions can be made via YourSay, or by emailing/writing to Council. Submissions will be received up until **10 am Tuesday, 3 December 2024**. You will find the media release on [page 7](#) or here. bit.ly/4frBVMx

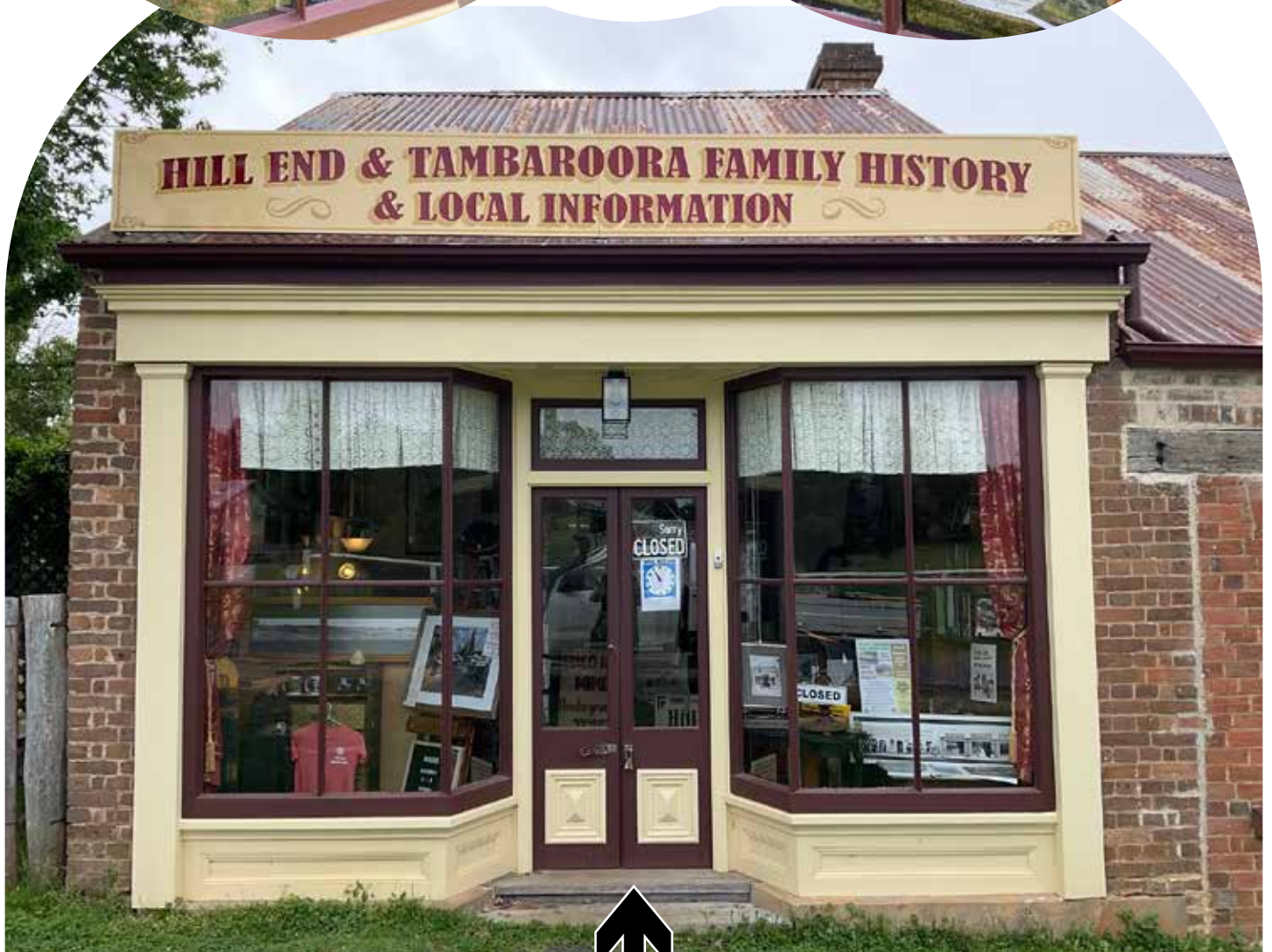
I would like to thank Debbie Court as the new editor of the newsletter for bringing a new fresh look to it ... as after 30+ issues it was time to take a new approach. Our January 2025 Newsletter might be a little light as I will be taking some time for an overseas trip.

Lorraine Purcell,
Hill End & Tambaroora Gathering Group Convenor

Holtermann's Corner ... It's official!

Our new sign, hand-painted by traditional signwriter Ray Cosier of Ray's Rustic Signs, was installed by Luke and Al from National Parks and Wildlife Service, Hill End office, just in time for our grand opening on Saturday 26 October.

Our 'new' old building with a quirky facade and 152 years young, shows the entrance to our bookshop and gallery. Here we sell our local publications and provide basic family history and tourist information from our ready-reference collection. You will also find a small range of artworks, homegrown souvenir items and quirky memorabilia for sale. We also carry a selection of district maps especially covering the fossicking areas and the iconic Bridle Track. Bookings for the Bald Hill Mine tour can also be made here.



Come on in and ... take a look around



For more in-depth research we have two rooms housing our consolidated family and local history collections.



We have three rooms open to the public where visitors can browse through our collection when looking for hints or references to their ancestors from the district. Like all good tourist venues, you can also ‘exit via the gift store’ where you can purchase small souvenirs of your visit to Hill End, as well as browse our local and family history books for sale. But wait, there’s more! We also have a small collection of local artworks, jams, chilli sauce, crafts and memorabilia for sale too. We are the Westfield of Hill End!



The ‘Maris and Special Collections Room’ is still a work in progress. In here we will be preserving the numerous treasured and irreplaceable collections of individual family history files and archives that have been entrusted to the Gathering Group or Hill End Family History. These include photos, certificates, stories, letters and memorabilia, and it also encompasses some of the community organisations that are no longer in existence.



‘Daph’s Room’ holds all the individual family history folders that Daphne Shead has worked on over 20+ years of researching family history in Hill End and Tambaroora. There are also folders full of information about the schools, mines, churches, cemeteries, shops, Post Office directories, petitions, occupations and the multicultural aspects of the district.



We also have two non-public rooms where we house all our stationery and book stock supplies and display material. We need to keep stocks of everything as it is at least a 2-hour return journey in either direction to the nearest Officeworks! The furniture may look eclectic, but it is what it is. It is functional and we strongly believe in judicious recycling and are very grateful to all those supporters who have donated bookshelves, filing cabinets, office chairs, tables, display items, kitchen equipment, carpets and especially Oberon Library, who provided our wonderful metal library shelving for all of Daph’s folders. This has meant that our ‘cash’ donations can be better directed to essentials like insurance, Ancestry subscriptions, technology, archival storage solutions and utilities. We don’t charge for our research work, but donations are always welcome (made easy with this link to a donation button at the bottom of our Shop tab on website <https://www.heatgg.org.au/publications>).

Volunteer accommodation is also available here and the comfy sofa converts to a bed when required.

The workroom allows us space to prepare displays from our local themed memorabilia collection which make use of our two shop front windows. The many visitors to the village are often seen peering in these windows, noses pressed up to the glass, trying to determine just what we are all about. Once inside they seem to love just talking to a ‘local’ and finding out about various aspects of village life. In the small time we have been in this location we have helped a considerable number of families learn about their ancestors and past lives in such an isolated mining village. Very few depart without purchasing some small trinket as a souvenir of their visit.

I mentioned the word ‘quirky’ earlier. These shops form part of Holtermann’s Corner and were built around 1872, the heyday of Hill End’s existence. Over 152 years they have seen many reincarnations.

When National Parks and Wildlife Service took on the management of the Historic Site back in the early 1970s this building was a crumbling ruin. The brickwork was fragile and damp, the windows broken and boarded up, the corrugated iron roof rusting away and exterior woodwork rotting. Looking at it today you would hardly recognise the building. As well as the rooms described above it now holds a basic but well-equipped kitchen and brand-new bathroom facilities, making it a very comfortable venue for our volunteers to spend time working on various aspects of our collection. Yes, it is still ‘quirky’ in that every doorway, bar one, has one or two steps up or down into the next room. Building regulations were not as stringent back in the 1870s! However, we see it as a gym workout when moving between rooms and still wonder at the architect’s reasoning.

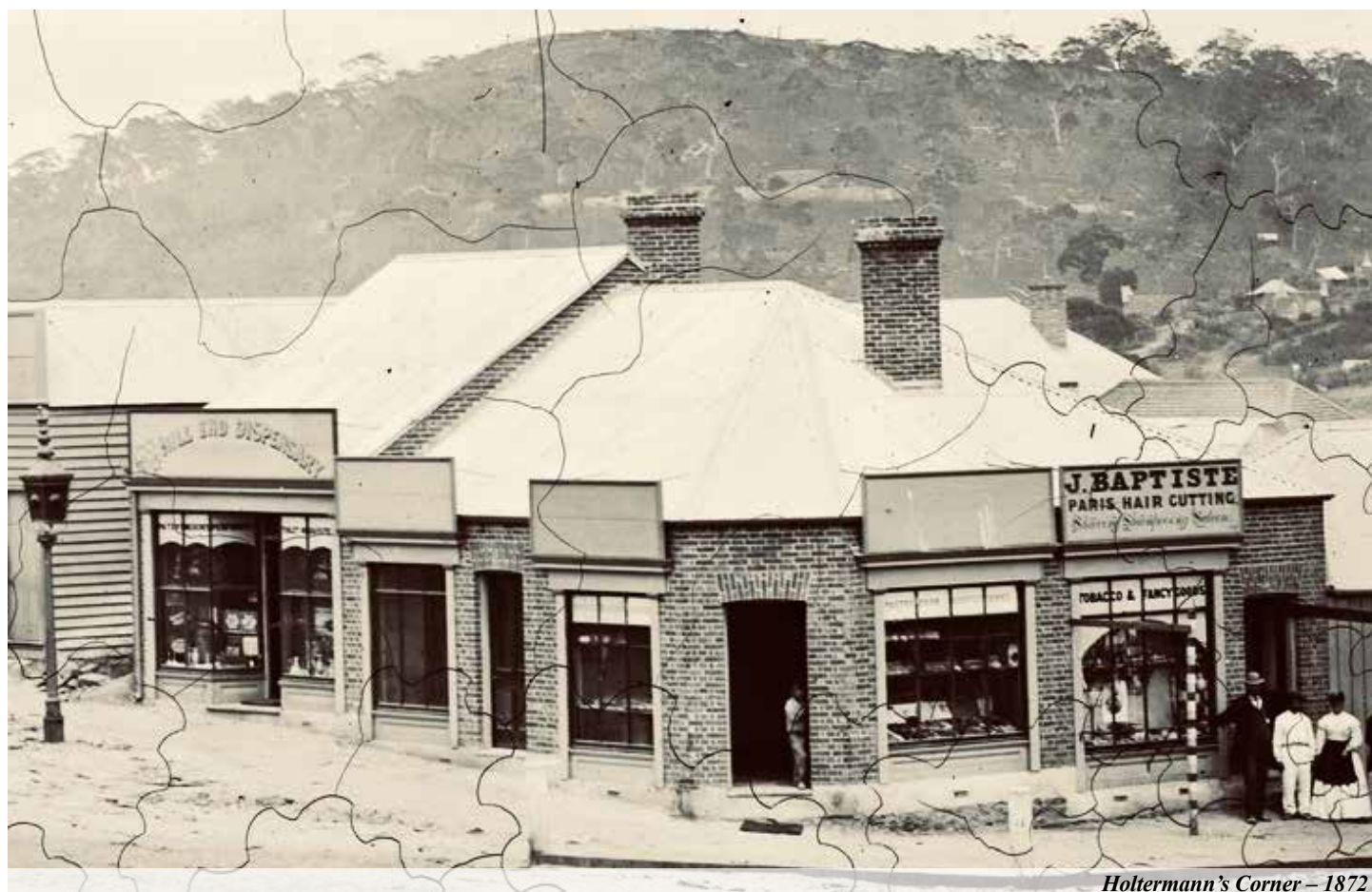


***Come and visit
the Hill End &
Tambaroora Family
History & Local
Information Centre
next time you are visiting
Hill End.***

The history of Holtermann's Corner

Holtermann's Corner now houses the combined collections of the Hill End & Tambaroora Gathering Group and Hill End Family History. It also has space for the numerous small collections of documents, records, photos and memorabilia that have been donated over the past 70 years or so. Give us time, we have a lot of work ahead of us in getting it all in order, disposing of duplicate material, and digitising other records as well as answering the enquiries that regularly come in via our website (www.heatgg.org.au) or personal visits to our Centre.

Our building which became known as Holtermann's Corner, was based on a shopping mall in George Street, Sydney, in the late 1860s. It was never meant to have awnings but comprised a collection of small one-roomed shops with doorways leading directly onto the street. The windows displayed the goods and services available to the increasing population of Hill End in the early 1870s, and it was said that the shopkeepers, not the miners, were the ones who made all the money.



Holtermann's Corner – 1872

Bernard Otto Holtermann was born in Hamburg in 1838. In his youth he was occupied in commerce, but not wishing to spend 3 years in military service, he left Germany in 1859, sailed from Liverpool, and arrived in Sydney in August the same year. There he hoped to meet his brother Herman but found that he had gone to the goldfields.

Unsuccessful in gaining any job on the land through his lack of English, Holtermann sailed on 13 September as a steward in the schooner *Rebecca* for the Pacific Islands and returned to Sydney in January 1860. He worked successively as a hotel steward, photographic assistant and groom before he became a waiter at the Hamburg Hotel in King Street, Sydney.

Here he met the Polish miner, Ludwig Hugo Louis Beyers, who had settled at Hill End in 1856 and he went with him to the Tambaroora–Hill End area. In 1861 they began prospecting on Hawkins Hill but for 5 years had little success. In order to hold the claim, Holtermann was forced to undertake a variety of occupations which ranged from butcher, baker and operated a makeshift ferry across the Macquarie River.

By 1868 he was licensee of the All Nations Hotel and on 22 February the same year at Bathurst he married Harriett Emmett. Beyers married her sister Mary on the same day.

With the rapid growth of the goldfields in the 1870s Holtermann recognised the commercial possibilities and potential of the location. On the corner of Tambaroora and Short Streets, right opposite the Hill End Public School Allotment 9 of Section 17 in the village of Hill End was registered to Bernard Otto Holtermann in February 1872, for which he paid £7/7/-.

In 1872 he commenced building a terrace of small shopfronts to provide urgently needed business space close to the commercial centre of Clarke Street. To his credit, or at least that of the builders of the brick premises, at least 7 of these shops survive to this day, albeit with some modifications. The buildings enjoyed a relatively short period of intensive use, followed by longer periods of decay and decline. The Merlin photographs taken in 1872 provide a brief record of tenancies, but it is likely that the occupants moved on after 1874 as there is no official record of subsequent occupants.

After Holtermann's death in 1885 the buildings had numerous owners, including John King Weir (1886), Alfred Pymont (1906), Betty Margaret Eyre of Hill End, spinster (1944), George William Jenkyns of Drummoyne, Public Servant (1965), with the last one being Herbert Thompson, a farmer and grazier of Hill End. Throughout this time, anecdotally, it was occupied by squatters, itinerants and families, especially during the Depression and World War 2 period.

It was finally acquired by the Crown under the management of the National Parks and Wildlife Service in 1971.

In 2006 it became tearooms and a gift store and prior to that it was an antique store for a number of years. In more recent times it has been a café and bakery and the home of Hill End Press.



After many years of abandonment, it has recently received much needed attention by National Parks and Wildlife Service and now it houses the Hill End & Tambaroora Family History & Local Information Centre.



Tambaroora Cemetery

Bathurst regional Council – MEDIA RELEASE 28 October 2024

Call for Community Input – Rural Cemetery Reforms



Bathurst Council is seeking community feedback on the recent NSW Government's Cemetery Reform that has impacted its ability to provide new burial opportunities within the Region's active rural cemeteries.

At its Ordinary Meeting held 16 October 2024, Council resolved in part to temporarily suspend further reservations for burials at the Region's six active rural cemeteries until it determined an outcome following public consultation.

Due to the age of the Region's cemeteries, Mayor Cr Robert Taylor stated there are issues arising with the identification of some grave sites and he confirmed that community consultation will commence to understand the impact of potentially ceasing burials at some cemeteries.

'Council will commence consultation with village groups concerning the possible closure of select rural cemeteries within the Bathurst Region for future reservations.

'Unfortunately, there are many old grave sites that are not able to be identified. This creates real concerns on the ability of our operators to safely find sites that don't already contain remains,' he said.

The NSW Cemetery Reforms have resulted in a number of statutory and regulatory impositions that cemetery operators are now required to comply with, causing significant financial burden, which Council is not able to fund, or physically be able to administer. These reforms have resulted in the following issues for Council:

- the significant concerns in respect to the ability to positively identify unused vacant burial plots in many of the Region's rural cemeteries,
- the significant costs that would be required to survey the existing cemetery sites and develop formal burial spaces, noting that it will be difficult to determine free unused space at many cemeteries, and
- the State Government's establishment of the new Cemetery regulatory requirements governing NSW cemetery operations, which Council does not have the physical or financial resources to enact or comply with.

The full report informing of the extent of the Cemetery reforms, the additional requirements that would be imposed on Council to legally operate the Region's rural cemeteries, and the anticipated costs that Council does not have funding for that would need to be sourced, can be found on Council's website at yoursay.bathurst.nsw.gov.au.

Council is seeking comment from residents within the rural community on this important issue.

Submissions will be received up until 4pm Tuesday, 3 December 2024 and can be made via the website yoursay.bathurst.nsw.gov.au/rural-cemetery-reforms at or to The General Manager, Bathurst Regional Council, PMB 17, Bathurst NSW 2795, or council@bathurst.nsw.gov.au

To make a submission online you will need to register and sign in on the website first.

The full 13 page report can be found at Council report Cemetery Reform yoursay.bathurst.nsw.gov.au/97182/widgets/449783/documents/297626

HEATGG will be making a submission to Council along the lines that we have a considerable collection of burial records, including maps and certificates etc. We are only too happy to share this information with Council in an effort to at least keep a portion of the Hill End Tambaroora General Cemetery open for future burials.

If you have documentary evidence of family members who are buried at either the General or Catholic Cemetery such as a death certificate or funeral notice etc, and are willing to share it with us then please scan or photograph it and send to info@heatgg.org.au so that we can add it to our records.

Royal Australian Historical Society Newsletter

Lots of good info in this RAHS newsletter (see link below). It is worth subscribing to (with the bonus it is free) as it has workshops, talks and events from affiliate societies as well. Also grant funding opportunities if you have any pet projects.

Past newsletters can be found here:

us9.campaign-archive.com/home/?u=5411a0b9294246e81efc5e50e&id=47573802c7

And you can subscribe here:

rahs.us9.list-manage.com/subscribe?u=5411a0b9294246e81efc5e50e&id=47573802c7



And finally, 50 years later ...

The *Hill End & Tambaroora Times and Miners' Advocate* (1871–1875) has been digitised and a few issues are now on Trove. See if your ancestor rated a mention in the local newspaper. There are only 9 known issues in existence at the State Library of NSW. Hoping more will come online soon. Check it out nla.gov.au/nla.news-title1894

The quality of the microfilm used is pretty poor so if you feel like logging into Trove and correcting any text you can, it will be of great benefit to all.

I will enquire if Trove plan to digitise more. In the meantime, we have an interesting article covering all Hill End newspapers on our webpage. Check out heatgg.org.au/newspapers

Lorraine Purcell, Convener, Hill End & Tambaroora Gathering Group Inc.

GLAM Peak Indexes: 'experimental search interface'

Researchers using Ancestry, Find my Past, FamilySearch, the Biographical Database of Australia as well as government archives sites such as NSW Museums of History offer researchers the option of a 'one-stop' search for individuals across multiple databases and record sets for some time. This facility makes possible to save time by locating links to records where the name appears in just a few keystrokes. 'Refine' options help to narrow the results even further.

There is now more great news for researchers looking for individuals in the indexes on the websites of Australian GLAM organisations (GLAM = Galleries, Libraries, Archives, Museums). Dr Tim Sherratt has developed the GLAM Name Indexes 'experimental search interface'. This means we can locate references to individuals across these collections of name indexes with a single search.

The index is part of Dr Sherratt's GLAM Workbench (glam-workbench.net) project.

'This is an attempt,' says Tim, 'to assemble some useful information about Australian GLAM ... datasets. As a first step, I've harvested GLAM-related datasets from the various national and state data portals.'

To search the indexes go to: glam-name-indexes-yajhxrvtxa-ts.a.run.app

Next, simply enter the name you are researching. After just a few seconds the results will appear. Click on the link under 'Details' to go to the relevant index on the particular GLAM organisation's website to find out more and confirm it's 'your' person.

For more information about the datasets, see the GLAM data portals section of the GLAM Workbench at: glam-workbench.net/glam-data-portals

Christine Yeats, RAHS Senior Vice President

The Society of Australian Genealogists

The Society of Australian Genealogists newsletter is free, just need to sign up on their website. Lots of good tips and information about new publications and special interest groups and events.

Check it out and register your email address at sag.org.au/Contact-Us

The Society of Australian Genealogists: sag.org.au

Use Boolean Search for More Accurate and Relevant Results

Boolean search uses certain words to connect search terms to broaden or narrow a search. The main words used are **AND**, **OR** and **NOT**. You can also improve search results by using double quotes (“...”) round a phrase so only searches containing that phrase will appear. Boolean search is particularly useful in search engines and when using TROVE.

- Using **AND** will narrow a search. For example, if you searched for ‘John Kennedy’ **AND** Newcastle **AND** 1880 you will only get results that contained all three phrases.
- **OR** will broaden a search. Searching for Melbourne **OR** Port Phillip will return results that contain either of those words.
- **NOT** will narrow a search, for example, “John Kennedy” **NOT** Sydney will exclude any results that contain the word Sydney.

National Archives

National Archives Report – World War Two Military dossiers are now digitalised and available on the National Archives website recordsearch.naa.gov.au

This could be interesting for researching parents, spouses or next of kin. Just search ‘Hill End NSW’ or ‘Tambaroora NSW’ etc in keywords and date range 1939–1945 to get the lot, or search under individual names with this date period.

Welsh family research

FamilySearch has a very helpful page on Wales, providing quick links to a vast number of sources, any of which may prove invaluable in tracking down your Welsh ancestry.

The National Library of Wales has an extensive list of digital material available for public access available through their specialist catalogues portal. Welsh newspapers, the Dictionary of Welsh Biography, Welsh ballads, estate records, wills and marriage bonds are just some of the records available.

Here are some helpful links to explore your Welsh heritage:

familysearch.org/en/australia

familysearch.org/en/wiki/Main_Page

familysearch.org/en/wiki/Wales_Websites

library.wales

library.wales/catalogues-searching/catalogues/specialist-catalogues

HEATGG Committee

Convener: Lorraine Purcell (info@heatgg.org.au or heatgg@yahoo.com.au) Mobile: 0408117784

Co-convener and Family History Centre: Sharon Shelton. (familyhistorycentre@heatgg.org.au)

Secretary: Barbara Burnett (secretary@heatgg.org.au)

Treasurer: Barbara Burnett (treasurer@heatgg.org.au)

Research Officer: Helen Wood (info@heatgg.org.au)

Membership Secretary: Debbie Court (membership@heatgg.org.au)

Publicity Officer: Karen Bates (publicity@heatgg.org.au)

Family History Centre Coordinator: Michelle Brooks (familyhistorycentre@heatgg.org.au)

Online Bookshop Officer: Alison Briggs (sales@heatgg.org.au)

Committee Members: Beatrice Brooks, (committee@heatgg.org.au)

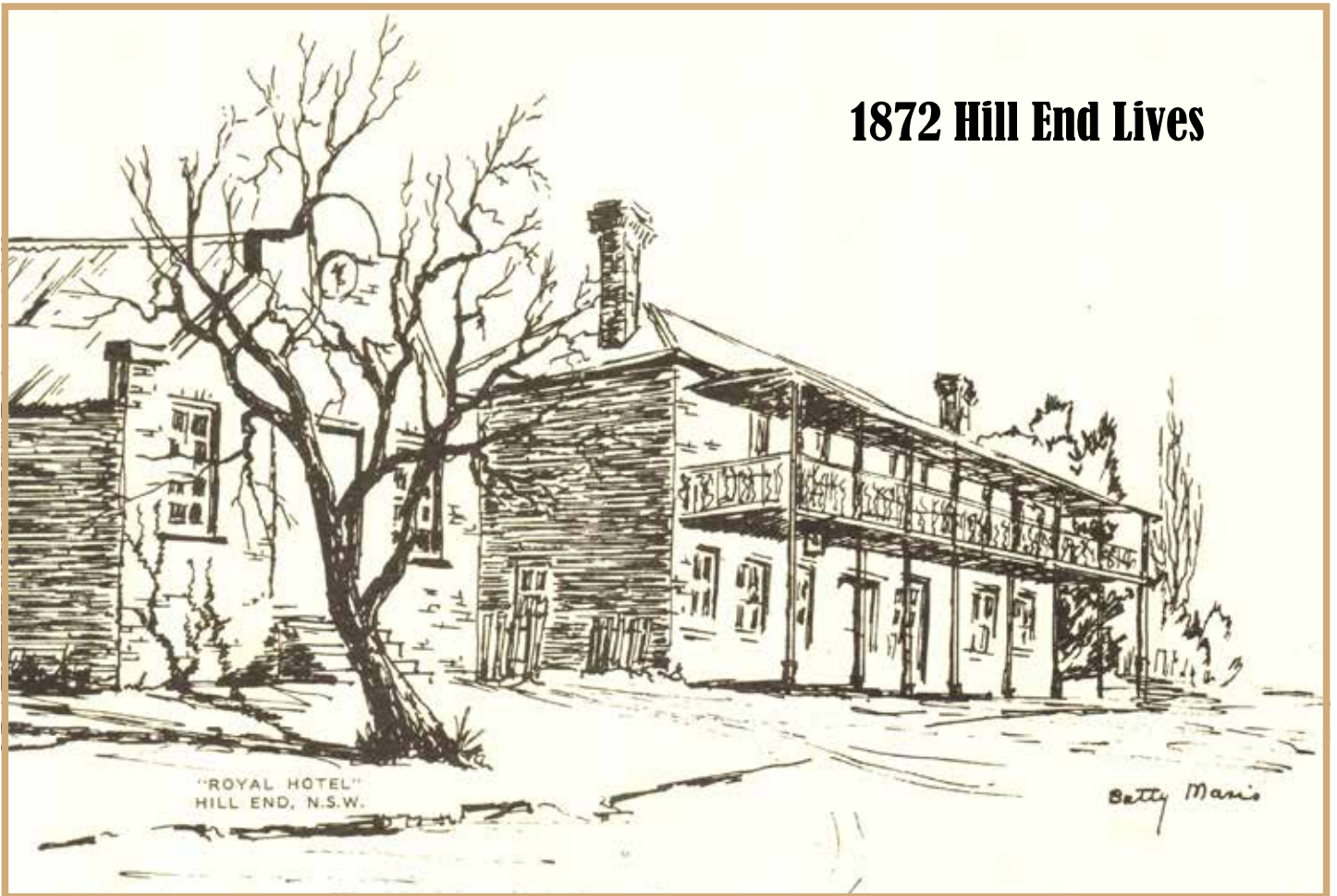
Community Market co-ordinators (ex officio): Ian and Julie Hodge (markets@heatgg.org.au)

Please feel free to contact them if you have any questions about their area of responsibility.

Special notice regarding heatgg.org.au email addresses

It has come to our attention that there are emails being sent by scammer/s using the committee’s heatgg.org.au email addresses. If you receive an email supposedly from Lorraine or committee members, **do not click on any links unless the subject line contains the words ‘Hill End’**.

1872 Hill End Lives



Raucous talk and endless swills
 Lit up the royal and filled the tills
 Fabulous finds and lots of loss
 Big talk, small talk township goss

Top verandah rocks and rolls
 As too much liquor takes its tolls
 Fists are flying, patrons scatter
 Who knows why, it doesn't matter

Things calm down, they all go home
 Or sleep it off somewhere alone
 Back to stampers, shovels, picks
 Dwellings made of daub and sticks

Some live in comfort for their time
 A well kept mantle clock might chime
 A picket fence ... whitewash walls
 Iron roof and chimneys tall

A massive find of untold worth
 Extracted from the rugged earth
 A golden nugget five feet tall
 The sepia picture tells it all



Families posing, long gone peoples
 Buildings, churches stores and steeples
 Faces fixed on silver plates
 Gaze through time ... we ponder fates

Now still standing brick facades
 Golden poplars... rubble years
 Old machinery, squeaky gates
 Rusty wire ... broken plates

Faded fortunes, booms and bust
 Well-trod walkways, dirt and dust
 Miners, children, husbands, wives
 Tell the tale of Hill End Lives

by Sue Maxwell
 (a descendant of Joshua Allot Burgess)



Thank you for service

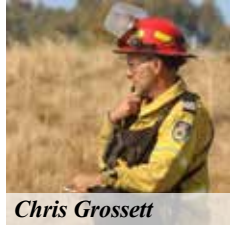
Members of the Hill End Rural Fire Service (RFS) were recently recognised for their voluntary service to the community.

For ongoing and extraordinary service to the RFS and Hill End community Bernie was awarded the National Medal. Over many years Bernie has and continues to be an integral part of our brigade.



Bernie Baker

For long service starting back in 1999 with the Pines Beach Bushfire Brigade (near Christchurch) Chris was presented with a long service medal for over 20 years' service. 'The first truck I served on in the Pines Beach brigade was a 1953 Bedford with a Hillman Hunter engine as our pump engine – times have changed.'



Chris Grossett

For long service to the RFS including deployment to the 2009 Victorian fires, the 2019/20 Black Summer Fires and 2023 Alpha Road Fire, Jeannie was presented with a long service medal for over 20 years' service.



Jeannie Littlewood

For long service including deployment to the 2019/20 fires and 2023 Alpha Road Fire Renee was presented with a long service medal for over 10 years' service.



Renee Robertson

For extensive service including serving as Captain of the Beacon Hill RFS Brigade, Mark 'Digger' Howard was awarded a long service medal for over 40 years' service.



Mark 'Digger' Howard

Thanks to everyone involved in the Hill End Brigade – past and present!

Check out our shop! Order now for Christmas!

You can purchase items online from our shop bit.ly/HEATGGSHOP

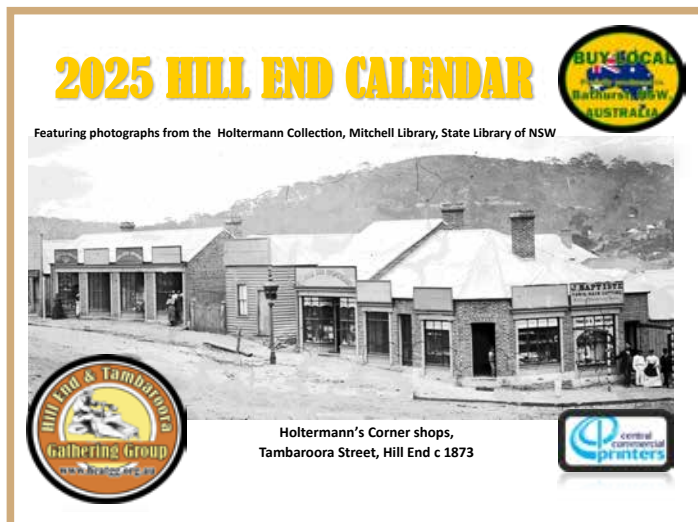
We have recently added two 2025 Calendars to the online Shop – Both include a couple of pages of local history included at the start and we have included an extra page to cover January 2026, to tide you over the New Year holidays.

The Hill End Calendar

In keeping with our move to Holtermann's Corner we have used a selection of the Holtermann photographs showcasing the district, some black & white and others are coloured.

The Bridle Track "The Good Old Days" Calendar

The Bridle Track "The Good Old Days", includes a selection of historic and not-so-contemporary photos from Sharon Shelton's collection.



Calendars are \$20 each. Postage is \$8 per calendar or \$15 for 2–8 copies to one address. Calendars can be posted to another address if people supply it, as a present.

Hill End Alive Podcasts

by Sheena Goodwin

Gold rush history, colourful tales and people, tourist information, artists of Hill End, directions to sites of interest.

Podcast 1: Introduction to Hill End

Short introduction and summary of environment and history of Hill End.

Podcast 2: Alluvial mining in Hill End and Tambaroora

Gold rush history, alluvial mining, first settlement in Tambaroora and Hill End.

Podcast 3: The boom and bust of reef mining in Hill End

Boom and bust of reef mining, fortunes made and lost, stories of miners and swindlers.

Podcast 4: Maria Theresa Cox

Pioneer woman on the goldfields.

Podcast 5: Early Colourful Characters

Interesting characters living in Hill End late 1800s.

Podcast 6: The Ackerman and Krohmann families by Lorraine Miller

The story of Johann Krohmann and Michael Ackerman, who in 1872, had a reef mining lease on Hawkins Hill in the golden quarter mile. Their story is told by Lorraine Miller a descendent who lives in Hill End.

Podcast 7: Travellers and Transport

Modes of transport from the beginning of the gold rush which began using tracks that developed into roads then rail. Opening up previously uninhabited inland areas.

Podcast 8: Chinese gold miners

The Chinese miners arriving in Australia in the 1850s. The Chinese mining population in Tambaroora and Hill End and on the Macquarie and Turon Rivers. Some of the Chinese who remained after the gold rush.

Podcast 9: Walking tour of 1870's Clarke Street – 1st loop

Starting at the Royal Hotel walk down Clarke Street and follow the description of the many businesses and hotels in this busy 1870's main street. Podcast 9 goes to Germantown Lane and back to the War Memorial. Podcast 10 describes the other half of Clarke Street.

Podcast 10: Walking tour 2nd loop lower Clarke Street

Walking tour 2nd loop of Clarke Street from Germantown Lane down right side of Clarke Street to Steels corner and back to Germantown Lane via the other side of Clarke Street.

Podcast 11: Walking tour of Tambaroora St

Descriptive walking tour from Royal Hotel go to left of War Memorial then veer right. Walk right side of Tambaroora Street down to Post Office and back left side.

Search for 'Hill End Alive' on your favourite podcast player or here:

Apple: podcasts.apple.com/au/podcast/hill-end-alive-podcasts/id1524597518

Android: open.spotify.com/show/7JPjqtuUO691hRiYnPA5qZ



Hill End & Tambaroora Gathering Group

NOTICE OF ANNUAL GENERAL MEETING

Notice is given to all Members of the Hill End & Tambaroora Gathering Group that the Annual General Meeting of the Gathering Group will be held on **Saturday, 1 March 2025 at 12 noon** at Rhodes Rotary Park, Killoola St, Concord West during the annual Gathering. All Members are invited.

Lorraine Purcell
Convener

Barbara Burnett
Secretary

Visit a mine – virtually

Ever wondered what it was like down the Reward Mine on Hawkins Hill, currently being worked by Vertex. Declan has done a ‘virtual tour’. Check it out at:

[linkedin.com/embed/feed/update/urn:li:ugcPost:7173437090586644481](https://www.linkedin.com/embed/feed/update/urn:li:ugcPost:7173437090586644481)

Hope you’re not claustrophobic! or scared of the dark ...



The exterior of Craigmoor House in Hill End Historic Site. Photo: John Spencer

Virtual tour of Craigmoor House

Step back in time on a virtual tour of historic Craigmoor House in Hill End. Home to the Marshall family for a century, this heritage building has been lovingly preserved both inside and out, providing a glimpse of what life was like during colonial times.

nationalparks.nsw.gov.au/things-to-do/immersive-stories/craigmoor-house-virtual-tour

Hill End Art Gallery

Come to the Hill End Art Gallery and enjoy our latest exhibitions ‘Response’ and ‘From the Studio’ from local artists Heather Dunn and Hui Selwood.

There is sculpture, drawing, collage, weaving, and printmaking on show – something for everyone.

The exhibition runs until **1 December 2024** and the gallery is open on weekends from 11 am to 3 pm. Perfect for a weekend drive.



The Hill End General Store & Cafe – Welcome Jim and Myrtle.

The Hill End General Store & Cafe is now in new hands and we welcome Jim and Myrtle to the community. No doubt they will bring their own quirky style to the village and as Jim announced on Facebook:

We will develop an interesting and hopefully satisfying menu for breakfast and lunch and hamburgers will be part of the new menu. I’m going to be training up as a baker and working on bread pizzas and the like, remembering, that we also intend to focus largely on rebuilding the general store, with all the basics and little luxuries, (like Tim Tams,) fresh bread, milk, and general grocery items and, of course, great coffee. So over time I hope to fulfil all your expectations.

YEAH! COFFEE!!!





We are also always keen to encourage new volunteers who feel that they have skills or an interest in the work of the group to nominate to join the committee, or just help out when they can. Now is a good opportunity to consider whether you have time to join us on some of our very interesting ventures.

We are especially looking for members who can help at our Family History Centre in Hill End, on weekends or during the week. If you have an interest in the family or local history of the area and enjoy learning more and sharing your knowledge, then we would love to hear from you.

If you live 'locally' – within an hour's drive from Hill End and can spare a day or so once a month this is a great opportunity to help us out.

If you live not so 'local', you might like to take a few days and stay locally. Or in Hill End basic caravan accommodation can be provided at a very nominal cost too. And we have accommodation available at the centre. The accommodation is a very modest for a token \$15 (1 or 2 people) per day. This just covers basic expenses. Both options are BYO linen, provide or buy your own food.

Contact Lorraine for more details (0408 117 784 or email heatgg@yahoo.com.au)



Hill End & Tambaroora Gathering Group 2025 Gathering and Annual General Meeting Information

Rhodes Rotary Park, Killoola Street, Concord
(Adjacent to the Kokoda Memorial Walkway and Brays Bay)

Saturday, 1 March 2025 from 10 am until 4 pm
2025 Annual General Meeting commencing 12 noon

You are invited to the HEATGG Annual Gathering

Saturday, 1 March 2025 from 10 am until 4 pm, Rhodes Rotary Park, Killoola Street, Concord West

About the day

The day is a very free-form gathering with some arriving for morning tea (or earlier - just note the banner may not be up when you get there before 10 am). It is an excellent opportunity for those with ancestors from the region to meet with others who have a similar interest.

The day initially started as a reunion for those who lived/had lived in the Hill End and Tambaroora area to get together, the Gathering is gradually evolving into a meeting place for those with links to the district to join in as well and share their experiences and family history research.

Our meeting place for the past 17 years (minus the covid years), Rhodes Park, caters well to our requirements. Our venue provides public transport access, plenty of parking, and toilets and a large shelter shed which we have booked solely for our use all day.

There will be a small selection of reference materials on display on the day and a selection of Hill End related books and memorabilia available for sale. We will have credit card facilities available and we will accept cash too.

What do people bring?

Boiling water, and coffee and tea making facilities will also be available. And for those that prefer a 'real' coffee, hopefully the kiosk will be re-opened.

As in the past years the following suggestions are a few ideas that have come to mind:

- your own picnic chairs/table or picnic rug, (if coming by car) so we can spread out and be comfy
- morning tea, lunch, afternoon tea

- copies of the ‘potted’ version of your family history, including photos (copies, of course, to keep the originals safely at home!). This may be an opportunity to swap stories and information.
- a name label with your name on it, (in LARGE PRINT so others can read it without glasses!) and include the main Hill End/Tambaroora family names that you are associated with
- a large sign, with the family name, that can be put on your ‘campsite’ so that others can make themselves known to you as well
- notepad and pens etc. to jot down the contacts or camera to ‘take’ notes a few copies of a 1-page ‘handout’ that gives your name and contact details and the families that you are interested in for swapping with other who have a similar family interest. This saves a lot of writing down in the excitement of the moment of finding others ‘doing’ the same family.

So, there you have it! This may be an opportunity to meet the faces that match many of the names we have been corresponding with in the past 12 months. It is also an opportunity to renew the friendships made at previous reunions. As it is a very informal get together there is no need to ‘book’ to come to the gathering. We’re sure to all fit in! Our venue should also provide enough shelter if the weather is inclement.

The bonus of attending the Gathering is you will also be ready to attend the annual general meeting. The AGM starts at 12 noon.

Further enquiries or details on parking and public transport can be made to Lorraine Purcell: 0408 117 784. Please leave a message if no answer or via email to heatgg@yahoo.com.au



The photo below shows everyone who attended the 2024 gathering and these are the families they represented:

Alder	Cullen	de la Torre	Elliott	Ettinger	Gardiner	Goodwin	Inch
Jeffree	Lawler	Lawson	Longmore	Maris	Porter	Salkeld	Smith
Standen	Starr	Trevena	Walpole	Willard	Woolard		

